

W I N G



ATTACK



SHOES & HANDBALLS

SOLES BY MICHELIN



Uwe Gensheimer



Jannik Kohlbacher



Marius Steinhauser



Daniel Rebmann



Miloš Vujović



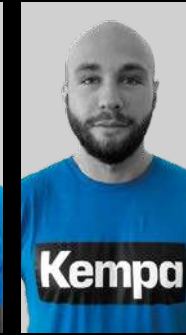
Milijan Vujović



Adrien Dipanda



Oscar Bergendahl



Matteo Menges



David More



Johanna Stackschläder



Nathalie Hagman



Lukas Stutzke



Gerdas Babarskas



Tomas Babak



Krešimir Kozina



Catherine Gabriel



Andreas Wolff



Max Darj



Felix Claar



Tim Nothdurft



Evgeni Pevnov



Luis Foege



Renars Uscins



Nathalie Hendrikse



Tim Hornke



Xenia Smits



Linn Blohm



Mohammad Sanad



Tomáš Mrkva



Björn Zintel



Marvin Lier



Annika Ingenpass



Fabian Gutbrod



Lea Rührter





## Kempastage

Exiting, emotional, incomparable.

Whether court, mat or sand – these are our stages. Discover the stories of our **#Siegesjäger** on:



[blog.kempa-sports.com](https://blog.kempa-sports.com)

## 04 BACK2COLOUR



## 08 WING LITE 2.0

NEW

AVAILABLE FROM JUNE 2023



## 14 WING 2.0

NEW

AVAILABLE FROM JUNE 2023



## 16 ATTACK ONE 2.0

NEW

AVAILABLE FROM JUNE 2023



## 18 ATTACK TWO 2.0

NEW

AVAILABLE FROM JUNE 2023



## 20 ATTACK MID



## 24 HANDBALLS



ONE OF THE  
LIGHTEST  
SHOES ON THE  
MARKET

**SOFT FIT**

elastic insock construction  
for highest comfort



**SOFT FIT**

elastic insock construction  
for highest comfort



# BACK 2 COLOUR



light EVA-cushioning with  
integrated softpad for best comfort  
and excellent shock absorption

**POWER CORE**



for more control and improved  
power transmission

**TORSION PLATE**

SOLES  
BY



for more control and improved  
power transmission

**TORSION PLATE**



light EVA-cushioning with  
integrated softpad for best comfort  
and excellent shock absorption

**POWER CORE**

04



SOLES BY /  MICHELIN

## WING LITE 2.0 BACK2COLOUR

Art. 2008520

**Size** 6-12, 13, 14, 15

**Weight** 268g/Size UK 8

**Material** upper material: textil + 3D-print,  
lining: textil, sole: rubber

04 fluo yellow/black



04



SOLES BY /  MICHELIN

## WING LITE 2.0 WOMEN BACK2COLOUR

Art. 2008530

**Size** 3,5-10

**Weight** 234g/Size UK 6

**Material** upper material: textil + 3D-print,  
lining: textil, sole: rubber

04 white/fair blue



04



SOLES BY /  MICHELIN

## WING 2.0 BACK2COLOUR

Art. 2008540

**Size** 6-12, 13, 14, 15

**Weight** 280g/Size UK 8

**Material** upper material: textil + 3D-print, lining: textil, sole: rubber

04 white/fluo yellow



03



SOLES BY /  MICHELIN

## ATTACK 2.0 BACK2COLOUR

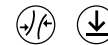
Art. 2008640

**Size** 3,5-12, 13

**Weight** 312g/Size UK 8

**Material** upper material: textil, lining: textil, sole: rubber

03 black



02



SOLES BY MICHELIN

## ATTACK 2.0 WOMEN BACK2COLOUR

Art. 2008650

**Size** 3,5-10

**Weight** 234g/Size UK 6

**Material** upper material: textil + 3D-print,  
lining: textil, sole: rubber

02 white/fair blue



03

## ATTACK 2.0 JUNIOR BACK2COLOUR

Art. 2008660

**Size** 28-33 (velcro closure)  
34-39 (complete laces)

**Weight** 246g/Size 35

**Material** upper material: textil, lining: textil,  
sole: rubber

03 fluo yellow/black



SOLES BY MICHELIN

Size 28-33 (velcro closure)



Size 34-39 (complete laces)



06

## WING 2.0 JUNIOR BACK2COLOUR

2008560

**Size** 28-33 (velcro closure)  
34-39 (complete laces)

**Weight** 246g/Size 35

**Material** upper material: textil, lining: textil,  
sole: rubber

06 white/fair blue



SOLES BY MICHELIN

Size 28-33 (velcro closure)



Size 34-39 (complete laces)



W I N G



SOLES BY /  **MICHELIN**



AVAILABLE FROM JUNE 2023



# ATTACK



SOLES BY  **MICHELIN**



AVAILABLE FROM JUNE 2023

MATRYX<sup>2.0</sup>

# W I N G L I G H T N E S S

## HONEYCOMB PROFILE

Dynamic honeycomb sculpture providing best multidirectional grip and explosive direction changes.



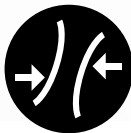
## HYPER GRIP

Excellent grip for takeoff and landing.



Working together with Michelin, we developed an outsole, guaranteeing excellent and durable performance in terms of grip and durability.

More about our cooperation at:  
[www.kempa-sports.com/en/michelin](http://www.kempa-sports.com/en/michelin)



Middle foot support for excellent stability and ergonomical rolling motion.

## TORSION GUIDE



Area with smooth surface and circular shape for best turning movements.

## PIVOT

# ATTACK

## STABILITY

### FLEX SECTOR

Flex zones for excellent roll moves.



### HOLE PROFILE

Abrasion resistant thanks to the bigger surface and providing outstanding grip at the same time.



### HONEYCOMB PROFILE

Honeycomb sculpture with additional bowl shape and bigger profile lines providing best multidirectional grip.



Special area with smooth surface & circular shape for best turning movements.

### PIVOT



PU injected torsion element for:  
- excellent stability  
- ergonomical rolling motion  
- additional support of the arch

### TORSION SUPPORT



SOLES BY  MICHELIN

Working together with Michelin, we developed an outsole, guaranteeing excellent and durable performance in terms of grip and durability.

More about our cooperation at:  
[www.kempa-sports.com/en/michelin](http://www.kempa-sports.com/en/michelin)



# W I N G

# L I G H T N E S S

**SOFT FIT**  
Elastic insock construction for highest comfort.



**ONE OF THE  
LIGHTEST  
SHOES ON THE  
MARKET**



Light ethylene vinyl acetate-cushioning with integrated softpad for the best comfort and excellent shock absorption.



**POWER CORE**

For more control and improved power transmission.



**TORSION PLATE**

The light cushioning consists of 100% ethylene vinyl acetate (20% of which is recycled ethylene vinyl acetate).



SOLES BY  **MICHELIN**

**AVAILABLE FROM JUNE 2023**

07



SOLES BY MICHELIN

NEW

AVAILABLE FROM 2023

## WING LITE 2.0

Art. 2008520

**Size** 6-12, 13, 14, 15

**Weight** 268g/Size UK 8

**Material** upper material: textil + 3D-print, lining: textil, sole: rubber

**06** white/classic blue, **07** red/black



06



07



SOLES BY MICHELIN

NEW

AVAILABLE FROM 2023

## WING LITE 2.0 WOMEN

Art. 2008530

**Size** 3,5-10

**Weight** 234g/Size UK 6

**Material** upper material: textil + 3D-print, lining: textil, sole: rubber

**06** white/lake blue, **07** white/red



06



06



SOLES BY MICHELIN

03



NEW

## WING 2.0

Art. 2008540

**Size** 6-12, 13, 14, 15

**Weight** 280g/Size UK 8

**Material** upper material: textil + 3D-print, lining: textil, sole: rubber

03 white/black, 06 black/red



04



SOLES BY MICHELIN

03



NEW

## WING 2.0 WOMEN

Art. 2008550

**Size** 3,5-10

**Weight** 248g/Size UK 6

**Material** upper material: textil + 3D-print, lining: textil, sole: rubber

03 white/cool grey, 04 white/red



10



SOLES BY MICHELIN

Size 28–33 (velcro closure)



Size 34–39 (complete laces)

NEW

AVAILABLE FROM 2023

### WING 2.0 JUNIOR

Art. 2008560

**Size** 28–33 (velcro closure)  
34–39 (complete laces)

**Weight** 205g/Size 35

**Material** upper material: textil, lining: textil,  
sole: rubber

09 white/rose cloud, 10 black/red



09



07

ATTACK



SOLES BY MICHELIN

Size 28–33 (velcro closure)



Size 34–39 (complete laces)

NEW

AVAILABLE FROM 2023

### ATTACK 2.0 JUNIOR

Art. 2008660

**Size** 28–33 (velcro closure)  
34–39 (complete laces)

**Weight** 246g/Size 35

**Material** upper material: textil, lining: textil,  
sole: rubber

06 white/classic blue, 07 mint



06





# MATRYX<sup>2.0</sup>

MATRYX 2.0<sup>®</sup> is an innovative woven fabric made of polyamide and kevlar-based fibres. This technology is patented by CHAMATEX<sup>®</sup>, a company specialized on the production of high-performance technical fabrics.

The woven upper with kevlar zone support provides excellent stability without compromising about lightness and flexibility. Its outstanding breathability and superior comfort makes MATRYX 2.0<sup>®</sup> the perfect indoor shoe technology.

## SOFT FIT

Elastic insock construction for highest comfort.



# ATTACK

# STABILITY

## CONTROL CLIP

Combined heel and midfoot fixation element for maximum stability



AVAILABLE FROM JUNE 2023



The light cushioning consists of 100% ethylene vinyl acetate (20% of which is recycled ethylene vinyl acetate).



Injected torsion element for excellent stability, ergonomically rolling motion and additional support of the arch.

## TORSION SUPPORT

SOLES BY



## KINETIC

## POWER

Co-moulded ethylene vinyl acetate cushioning for improved absorption and rebound properties.





05

MATRYX<sup>®</sup> 2.0

SOLES BY /  MICHELIN

NEW

AVAILABLE FROM 2023

## ATTACK ONE 2.0

Art. 2008590

**Size** 6-12, 13, 14, 15

**Weight** 310g/Size UK 8

**Material** upper material: textil + thermoplastic polyurethane, lining: textil, sole: rubber

**04** white/black, **05** white/red



04



03

MATRYX<sup>®</sup> mesh

SOLES BY /  MICHELIN

NEW

AVAILABLE FROM 2023

## ATTACK PRO 2.0 WOMEN

Art. 2008671

**Size** 3,5-10

**Weight** 265g/Size UK 6

**Material** upper material: textil + 3D-print, lining: textil, sole: rubber

**02** white/grey, **03** white/red



02





NEW

AVAILABLE FROM 2023

## ATTACK TWO 2.0

Art. 2008630

**Size** 6–12, 13, 14, 15

**Weight** 315g/Size UK 8

**Material** upper material: textil + 3D-print, lining: textil, sole: rubber

02 schwarz/aqua, 05 black/rainbow, 06 cool grey



05



NEW

AVAILABLE FROM 2023

## ATTACK 2.0 WOMEN

Art. 2008650

**Size** 3,5–10

**Weight** 272g/Size UK 6

**Material** upper material: textil, lining: textil, sole: rubber

04 white/rose cloud, 05 rose



08



09



06



07



NEW

AVAILABLE FROM 2023

## ATTACK THREE 2.0

Art. 2008640

**Size** 3,5-12, 13

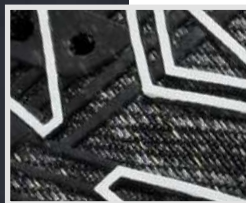
**Weight** 312g/Size UK 8

**Material** upper material: textil, lining: textil,  
sole: rubber

**06** black, **07** white, **08** red, **09** black/red



**CONTROL**  
THE **GAME**



01



**MATRIX**<sup>®</sup> *EX*

SOLES BY  **MICHELIN**



## **ATTACK MID**

Art. 2008670

**Size** 6-12,13,14,15

**Weight** 380g/Size UK 8

**Material** upper material: textil + thermoplastic polyurethane, lining: textil, sole: rubber

**01** black



02



Sneakers with knitted upper



06



### K-FLOAT

Art. 2008570

**Size** 3,5–12, 13, 14, 15

**Weight** 193g/Size UK 8

**Material** upper material: textil, lining: textil,  
sole: ethylene vinyl acetate + rubber

**02** black, **06** marine

CUSTOMIZABLE



Franziska Peter



01

02

03

04

05

07



01

**PROMO T-SHIRT**

Art. 2002092 | page 116

02

**CLASSIC SHORTS**

Art. 200316002 | page 144

03

**LOGO CLASSIC SOCKS**

Art. 200354102 | page 152

04

**WING 2.0 JUNIOR**

Art. 200856009 | page 15

05

**POLY SHIRT**

Art. 200234602 | page 114

06

**TIRO**

Art. 200190803 | page 28

07

**TIGHTS KIDS**

Art. 200316201 | page 150

08

**TEAM T-SHIRT**

Art. 200209107 | page 117

09

**PERFORMANCE PANTS**

Art. 200507501 | page 138

10

**ATTACK 2.0 JUNIOR**

Art. 200866006 | page 15

11

**LEO**

Art. 200190701 | page 27

12

**GRAPHIC SHIRT GIRLS**

Art. 200228402 | page 127

13

**TIGHTS KIDS**

Art. 200316201 | page 150



LEO

**ATTACK 2.0 JUNIOR**



from size 34 with complete laces



# SPECTRUM

## SYNERGY PRO



Surface material with microfiber structure provides optimum grip and excellent ball control.



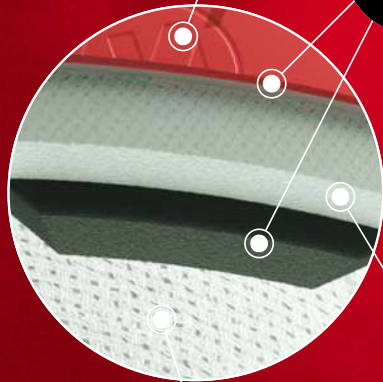
Multi-layered X2 lamination increases the rebound and softness of the ball.



textile lamination provides excellent roundness and supports the stability and robustness.



The latex bladder with textile lamination prevents over pumping while minimising air loss.



**SYNERGY**, the unique handball technology from Kempa.

The innovative production procedure and revolutionary non-slip material improves the roundness and guarantees high form stability.

**The result:** more **GRIP**, better **FEEL FOR THE BALL**, better **CONTROL**.



01



top matchball with an unique 30-panel-construction

very soft and grippy upper material with Kempa embossing for best grip and outstanding ball control

excellent rebound combined with a soft feel for the ball thanks to the multilayer foam lamination

latex bladder with textile lamination prevents from pumping over and provides air retention at the same time

suitable for the use of resin

**NEW**

## SPECTRUM SYNERGY PRO

Art. 2001902

**Size** 2, 3

**01** cool grey/sweden blue



01



excellent match and training ball with a unique 30-panel-construction

soft and grippy upper material with Kempa embossing for best grip and an outstanding ball control

very good rebound combined with a comfortable feel for the ball thanks to the additional foam layer

latex bladder with textile lamination prevents from pumping over and provides air retention at the same time

suitable for the use of resin

**NEW**

## SPECTRUM SYNERGY PLUS

Art. 2001914

**Size** 0, 1, 2, 3

**01** sweden yellow/sweden blue



01



top matchball

very soft and grippy upper material with Kempa embossing for best grip and an outstanding ball control

excellent rebound combined with a soft feel for the ball thanks to the concentrated multilayer foam lamination

the latex bladder provides outstanding rebound and air retention at the same time

suitable for the use of resin

**NEW**

## **BUTEO**

Art. 2001903

**Size** 2, 3

**01** petrol/orange

PVC  
FREE

01



high quality match and training ball with a unique 30-panel-construction

soft and grippy upper material with Kempa embossing for more grip and outstanding ball control

very good rebound with a comfortable feel for the ball thanks to the additional foam layer

latex bladder with textile lamination prevents from pumping over and provides air retention at the same time

suitable for the use of resin

**NEW**

## **SPECTRUM SYNERGY PRIMO**

Art. 2001915

**Size** 0, 1, 2, 3

**01** red/sweden blue

  PVC  
FREE

01



excellent training ball

soft and grippy upper material with Kempa embossing for better grip and very good ball control

very good rebound with a comfortable feel for the ball thanks to the additional foam layer

the latex bladder retains its shape and provides outstanding rebound and air retention at the same time

suitable for the use of resin

**NEW**

## GECKO

Art. 2001906

**Size** 0, 1, 2, 3

**01** grey/blue



01



durable training ball

grippy upper material with Kempa embossing for better grip and ball control

comfortable feel for the ball thanks to the soft foam lamination

the latex bladder retains its shape and provides outstanding rebound and air retention at the same time

suitable for the use of resin

02



03



**NEW**

## LEO

Art. 2001907

**Size** **01** 0, 1, 2, 3  
**02** 0, 1, 2  
**03** 0, 1, 2, 3

**01** mint/black, **02** bordeaux/black, **03** blue/black





01

lightweight training and match ball for children

grippy PU upper material with Kempa embossing for more grip and ball control

comfortable feel for the ball thanks to the soft foam lamination

the latex bladder retains its shape and provides outstanding rebound and air retention at the same time



02



03

**NEW**

## TIRO

Art. 2001908

**Size**      Farbe **01** 00  
                  Farbe **02** 0  
                  Farbe **03** 1

**01** fluo orange/black, **02** fluo grün/black,  
**03** red/black



01



02

perfectly suited for use on sand

due to the unique PVC material, the ball surface is easy to grip

the contrasting colour gives the ball a strong perception

## SOFT BEACH

Art. 2001897

**Size**      Color **01** 2  
                  Color **02** 3

**01** fluo red, **02** fluo blue



05

durable foam ball

low risk of injury

suitable for children

suitable for school sports and recreation

## SOFT

Art. 2001894

**Size**      one size

**05** ice grey/fluo orange



01

Plush ball in handball design

very light and soft

## SOFT KIDS

Art. 2001896

**Size**      one size

**Material**      100% polyester

**01** kempablue/fluo yellow



02



weighted ball (600 gr)

good grip, durable

## **TRAINING 600**

---

Art. 2001823

**Size** 2

**02** fluo yellow

PVC  
FREE

02



weighted ball (800 gr)

good grip, durable

## **TRAINING 800**

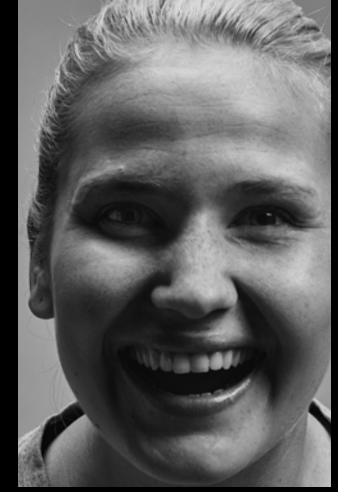
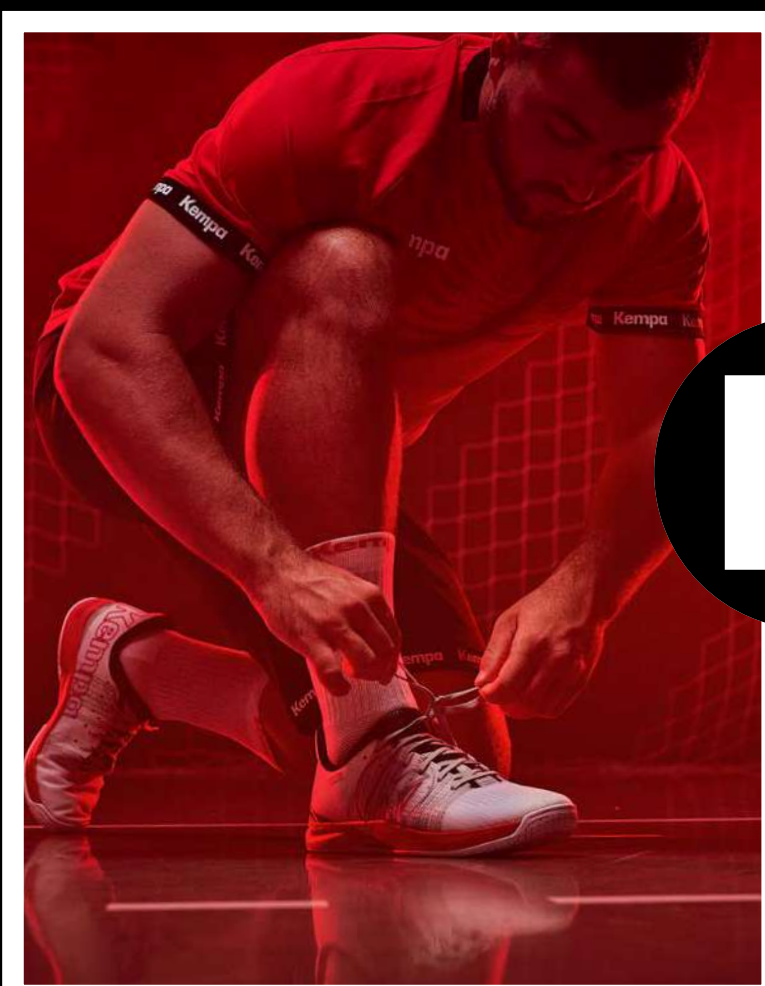
---

Art. 2001824

**Size** 3

**02** fluo yellow

PVC  
FREE



W I N G



ATTACK



SHOES & HANDBALLS

SOLES BY MICHELIN

